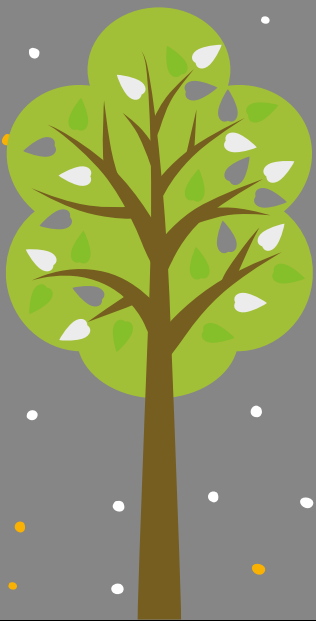


SPRING QUIZ 2020

1. What percentage of breast cancers could be prevented?
A 25%
B 100%
C 9%
2. Can men get breast cancer?
A No
B Yes
C Maybe
3. How many minutes of moderate exercise should the average person do weekly?
A 200 minutes
B 500 minutes
C 150 minutes
4. How many portions of fruit and veg should you eat a day?
A 10
B 5
C 15
5. What does the term EDC stand for?
A Endocrine Disrupting Chemicals
B Eat Don't Chew
C Ever Doing Chores
6. What is the first day of spring called?
A New Year's Day
B The Vernal Equinox
C Earth Day

CONITUNED - PAGE 2



7. On which date is St Patrick's Day celebrated?

- A 17th March
- B 25th December
- C 9th September

8. Which small white flowers are the first to emerge in Spring?

- A Daisys
- B snowdrops
- C Dandelions

9. What spring flower is often associated with Wales?

- A Daffodil
- B Sunflower
- C Lily

10. In 2021, Chinese New Year will be the year of which animal?

- A The Dog
- B The Cat
- C The Ox

11. Which Poet Laureate wrote the poem Valentine?

- A William Shakespeare
- B Carol Ann Duffy
- C Julia Donaldson

12. Who played Shakespeare in the 1998 film Shakespeare in Love?

- A Joseph Fiennes
- B Leonardo Di Caprio
- C Keanu Reeves

CONITUNED - PAGE 3

13. Who once said 'to love oneself is the beginning of a lifelong romance'?

- A Coco Chanel
- B Oscar Wilde
- C Marilyn Monroe

14. The play Romeo and Juliet is set in which Italian City?

- A Verona
- B Rome
- C Florence

15. In May 2020 the city of Paris expressed concerns over the growing number of what items being put on bridges as a symbol of love?

- A Balloons
- B Padlocks
- C Roses

16. What is the name of the Sunday before Easter?

- A Coconut Sunday
- B Mothering Sunday
- C Palm Sunday

17. Which light fruit cake, with two layers of marzipan is traditionally eaten at Easter?

- A Simnel Cake
- B Hot Cross Bun
- C Lemon Drizzle Cake

18. Which item of clothing is traditionally associated with Easter parades?

- A Bunny ears
- B Easter Bonnet
- C Chick Costume

CONITUNED - PAGE 4

19. On what day are hot cross buns traditionally eaten?

- A Everyday
- B Christmas Day
- C Good Friday

20. To the nearest million how many Easter Eggs are sold every year in the UK?

- A 20 million
- B 80 million
- C 40 million

21. What does Spring symbolize?

- A Rebirth
- B Easter Eggs
- C Bouncing

22. Is Spring considered to be the first, second, third or fourth season?

- A Second
- B First
- C Fourth

23. For Australians in what month does spring start?

- A March
- B April
- C September

24. What UK holiday takes place on 1st May?

- A New Year's Eve
- B May Day
- C Easter Monday

25.

What is the spring holiday for college students in the USA known as?

- A Spring Break
- B Spring Mend
- C Spring fix



ANSWERS

1. 25%
2. Yes
3. 150 Minutes
4. 5
5. Endocrine Disrupting Chemicals
6. The Vernal Equinox
7. 17 March
8. Snowdrops
9. Daffodil
10. The Ox
11. Carol Ann Duffy
12. Joseph Fiennes
13. Oscar Wilde
14. Verona
15. Padlocks
16. Palm Sunday
17. Simnel Cake
18. Ladies hat
19. Good Friday
20. 80 million
21. Rebirth
22. First
23. September
24. May Day
25. Spring break

